

**OREGON HOMELAND SECURITY  
AND  
EMERGENCY MANAGEMENT**

**“Who’s on First?”**

**It won't happen here.**

**If it happens here, it  
won't affect me.**

**If it does effect me, it  
won't be that bad.**

**If it is that bad, I can't  
do any thing about it  
anyway, so.....**

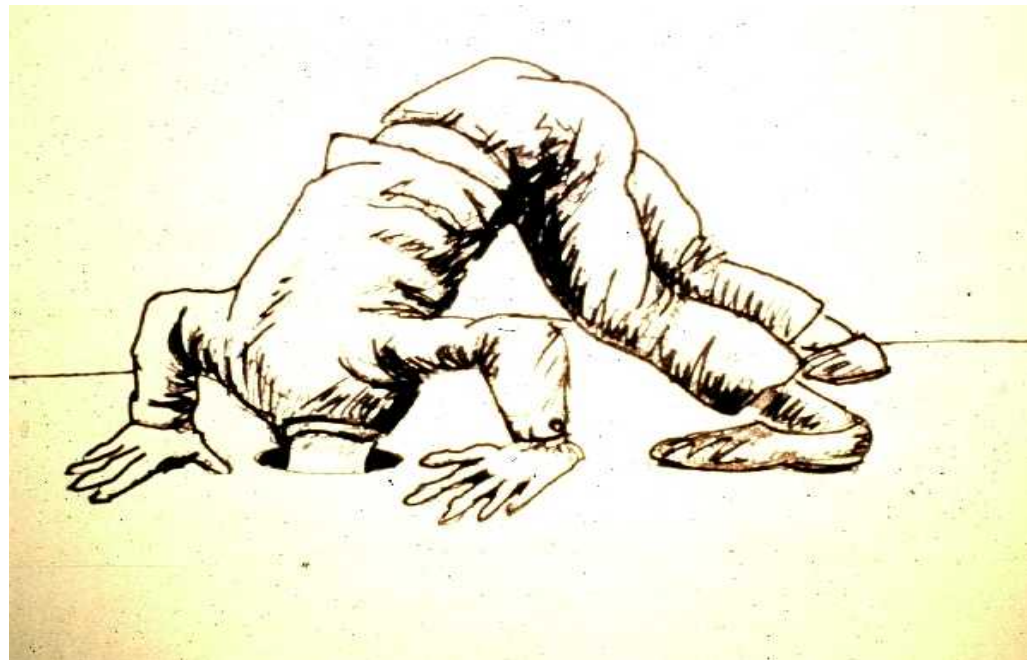
**"We will not be successful**

**In the war on terrorism or  
natural/manmade**

**hazards if**

**We do not transform our  
capabilities in a collaborative and  
coordinated**

**Process"**



**Homeland  
Security**



**Local First Responders, Emergency Management**



**Mayor/County Executive**

Declares County-wide Emergency



**State Emergency Management**

**Governor**

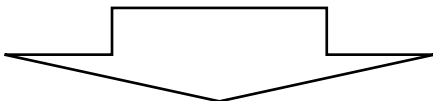
Activates Local Emergency Operations Center

**Activates State Emergency Coordination Center**

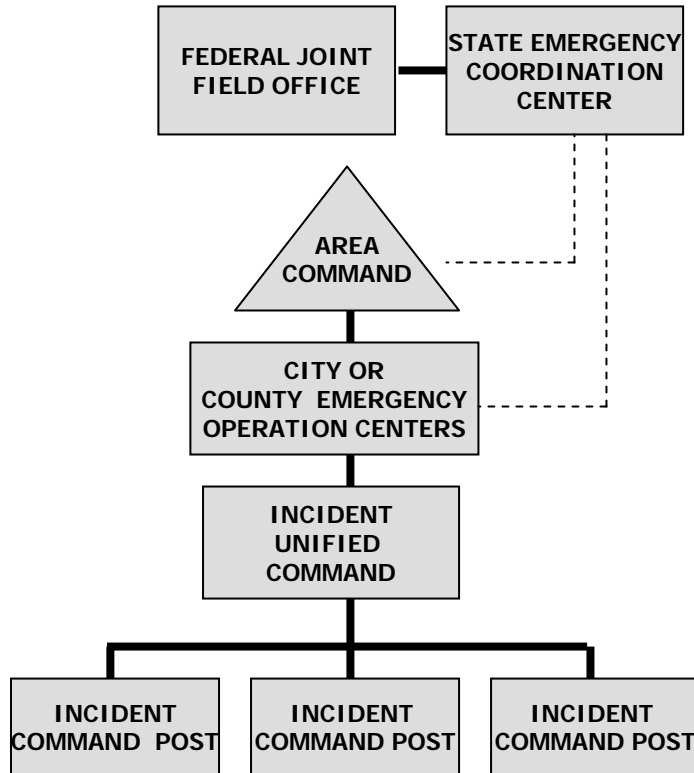
**State Resources deployed**

**Governor declares "State of Emergency"**

Requests Federal Assistance



# WHAT DOES IT LOOK LIKE



The Governor is in charge. The Governor delegates his authority to the state emergency management director (Governor's authorized representative).

An area command is established when the complexity of the incident management span-of-control considerations so dictate.

Unified command is an important element in multijurisdictional or multiagency incident management. It provides guidelines to enable agencies with different legal, geographic, and functional responsibilities to coordinate, plan, and interact effectively.

Incident Management of a disaster starts at the lowest level (city). Then moves to the county level.



# “EMERGENCIES – WHO IS IN CHARGE”

ORS 401.015 – The state shall prepare for emergencies, but shall not assume authority or responsibility for responding to such an event unless the appropriate response is beyond the capability of the city and county in which it occurs, the city or county fails to act, or the emergency involves two or more counties.

At the state level the Governor is in charge. As the Governor’s authorized representative (ORS 401.270) the state emergency management Director is responsible for coordinating and facilitating emergency planning, preparedness, response and recovery. The state emergency management director provides a state emergency coordination center, which is staffed to aid the Governor in the performance of duties.

The state emergency coordination center acts as the Governor’s command center and is a combination of state agencies and subject matter experts in which to facilitate the decision making process for the Governor and support incident management policies and priorities, facilitate logistics support and resource management, coordinate incident related information, and coordinate interagency and intergovernmental issues regarding incident management policies, priorities, and strategies.

# AN INCIDENT AT YOUR FACILITY

- FIRST-YOU MUST HAVE A PLAN ON HOW TO MANAGE THE EVENT AT YOUR LEVEL OF CURRENT CAPABILITIES.
- SECOND-HAVE YOU WORKED WITH YOUR LOCAL FIRE AND POLICE DEPARTMENTS, LOCAL EMERGENCY MANAGER AND OTHER JURISDICTIONS.
- THIRD-HAVE YOU THEN DISCUSSED IF THE INCIDENT GETS BIGGER AND OUT OF YOUR CONTROL? DO YOU KNOW WHO TO CALL?
- FOURTH-WHAT IF YOUR PERSONNEL WHO ARE TO IMPLEMENT THE PLAN ARE NOT AVAILABLE?



**Homeland  
Security**

# AN INCIDENT AT YOUR FACILITY

- NOTE TO FILE – IF SUSPECTED TO BE A TERRORIST EVENT YOU WILL HAVE A CRIME SCENE.
- MORE RESOURCES CAN COME FROM-CURRENT MUTUAL AID AGREEMENTS FROM FIRE AND POLICE AND?
- THROUGH THE STATE WE CAN BRING RESOURCES FROM DEPT. OF TRANSPORTATIONS, OREGON NATIONAL GUARD JUST TO NAME A FEW.
- IF IT IS A VERY LARGE AND SERIOUS EVENT THEN THE STATE CAN WORK TO BRING FEDERAL PARTNERS IN.



**Homeland  
Security**

# COMMAND OF THE INCIDENT

- ALL EVENTS SHOULD BE MANAGED BY THE INCIDENT COMMAND SYSTEM. YOU HAVE A SINGLE INCIDENT COMMANDER.
- WITH LARGER EVENTS YOU MAY STILL HAVE ONLY A SINGLE EVENT COMMANDER.
- AS THE EVENT EXPANDS YOU MOVE INTO A UNIFIED COMMAND STRUCTURE.
- IF THE EVENT BECOMES LARGER THEN YOU WILL NEED TO ESTABLISH AND AREA COMMAND.



**Homeland  
Security**



# IN REALITY – WHO’S ON FIRST?”

- The size of the event.
- Key personnel not available.
- Leaders not familiar with system or trained.
- Leaders not familiar with their own organization.
- Employees and their families prepared.
- Control of the media.
- Lack of communications.
- Lack of situational awareness.

# **THANK YOU FOR YOUR EFFORTS AND TIME**

**KENNETH D. MURPHY, DIRECTOR  
OREGON HOMELAND SECURITY  
AND**

**EMERGENCY MANAGEMENT**

**503-378-2911 EXT 22225**

**[kmurphy@oem.state.or.us](mailto:kmurphy@oem.state.or.us)**

**“TODAY’S PREPARATIONS WILL DETERMINE  
TOMORROWS OUTCOMES”**