

FEMA Workshop

Processes & Procedures for
Disaster Recovery & Reimbursement

May 18, 2006

Organized by the AAPA

Experience from Lessons Learned

Take pictures of existing conditions

Secure important documents

Insurance & Lease Documents, Asset Schedules

Create forms to record specific employee and equipment for hours utilized

Form your damage inspection team as part of your overall plan – they will not bring you the right information if they do not know what to look for.

2004 & 2005 HURRICANE EXPERIENCE



THE PORT OF PALM BEACH

3 Declared Disasters in 13 months

- Hurricane Frances - Sept. 6, 2004
- Hurricane Jeanne - Sept. 26, 2004
- Hurricane Wilma - Oct. 24, 2005



Florida Ports Affected



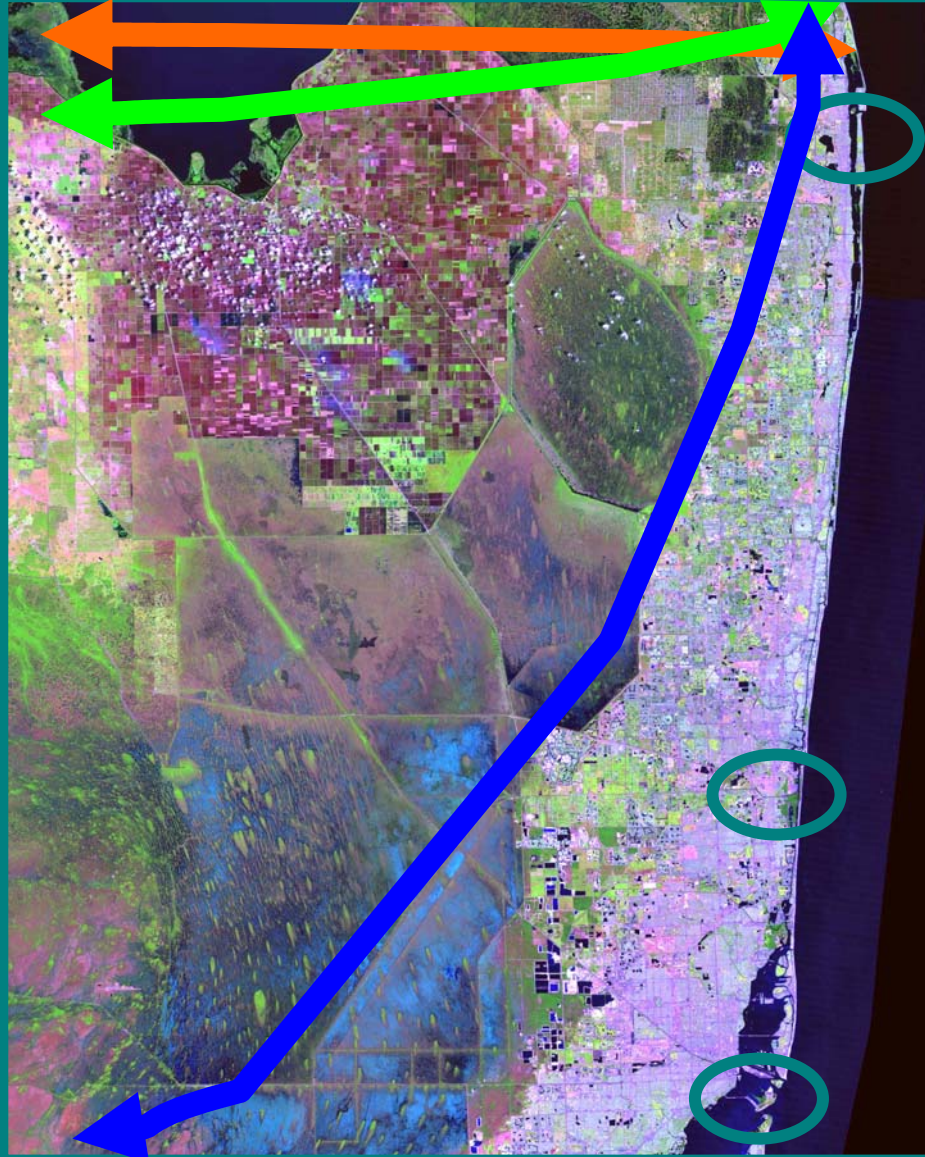
Frances



Jeanne



Wilma



Spent thru March 2006

• Hurricane Frances	\$ 194,487
• Hurricane Jeanne	\$ 947,449
2004 TOTAL	\$1,141,936

Repairs continue

• Hurricane Wilma	
2005 TOTAL	\$ 344,528

Difficulties Encountered

- Lack of contractors
- Backlog of work
- Additional costs incurred due to demand
- Lack of inventory due to demand
- Procurement policies that hinder repairs
- Lack of Documentation of repairs

2004 & 2005 Damages

- Hurricane Frances \$ 680,643
- Hurricane Jeanne \$ 679,696
- Hurricane Wilma \$2,746,235

TOTAL

\$4,106,574



2005 Damage

Cargo Control Gate	\$78,000
--------------------	----------



RETURN
I. D. & GATE
PASS AT GATE
YOU





TOW AWAY
ZONE
UNAUTHORIZED VEHICLES WILL BE TOWED AT OWNER'S RISK
ALL TIME TOWING
842-5544

NO TRESPASSING
VIOLATORS WILL BE PROSECUTED
PERSONS AND VEHICLES ENTERING WILL BE SUBJECT TO SEARCH
RANGE REQUIRED
N. 10000 44.00 11

SPEED
LIMIT
15



2004 & 2005 Damage

High Mast Light Poles	\$250,000
-----------------------	-----------



10.26.2005



10.26.2005

Business Interruption

Emergency Repairs interfering
with Vessel Berthing

Insurance nor FEMA pays for
removal of waterside debris



2005 Damage

Port Maintenance Shop Roof



10. 28. 2005



11. 7. 2005



2005 Damage

Dockside Warehousing

Older Metal Warehousing is
Vulnerable to High Winds











10.25.2005

Today's Lessons

Learn what to expect

Learn what is eligible/non-eligible

Document everything

Maximize reimbursement of recovery costs